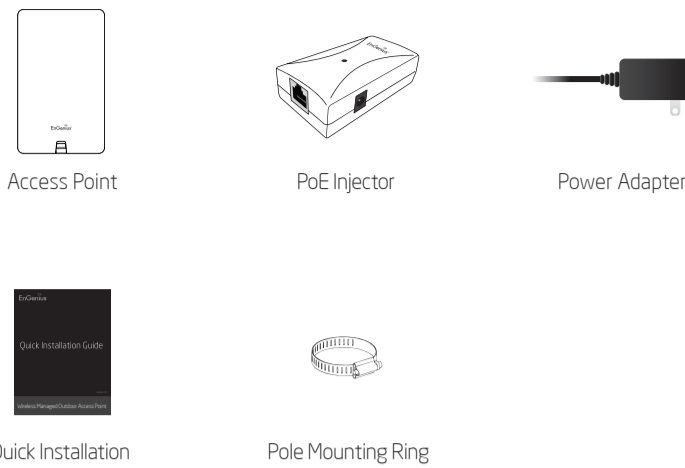


# Quick Installation Guide

ENS1200 | ENS1750  
version 1.0

Dual Band, Long Range  
Wireless Outdoor Access Point

## Package Contents



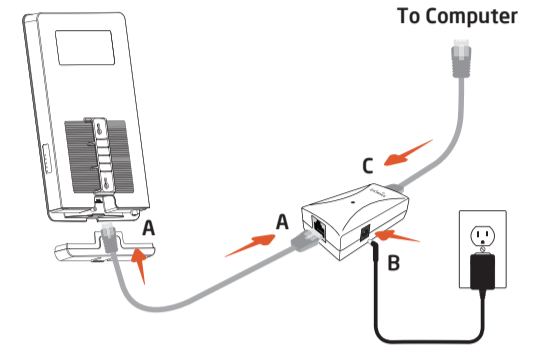
## Minimum Requirements

- + Broadband Internet Service (Cable or DSL Modem)
- + Internet Browser (Internet Explorer, Safari, Firefox, Chrome)

## 1 Connecting the Access Point

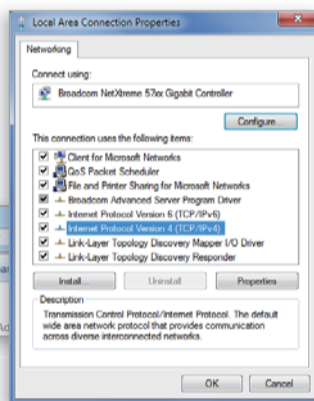
- Connect one end of the Ethernet cable into the **main LAN port (PoE)** of the Access Point and the other end to the **AP Ethernet port** on the PoE injector.
- Connect the **Power Adapter** to the **DC-IN port** of the PoE injector and plug the other end in to an electrical outlet.
- Connect the second Ethernet cable into the **LAN port** of the PoE injector and the other end to the Ethernet port on the computer.

**Note:** The Access Point supports both IEEE 802.3at PoE (Power over Ethernet) or the included power injector. You may use either one as the power source. **DO NOT use both at the same time.**



## 2 IP Address Configuration

- Once your computer is on, ensure that your TCP/IP is set to **On** or **Enabled**. Open Network Connections and then click **Local Area Connection**. Select **Internet Protocol Version 4 (TCP/IPv4)**.

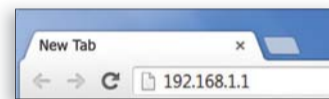


- If your computer is already on a network, ensure that you have set it to a Static IP Address on the interface.  
(Example: 192.168.1.10 and the Subnet Mask address as 255.255.255.0)

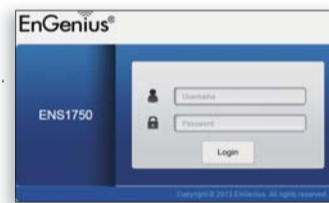


## 3 Access Point Setup

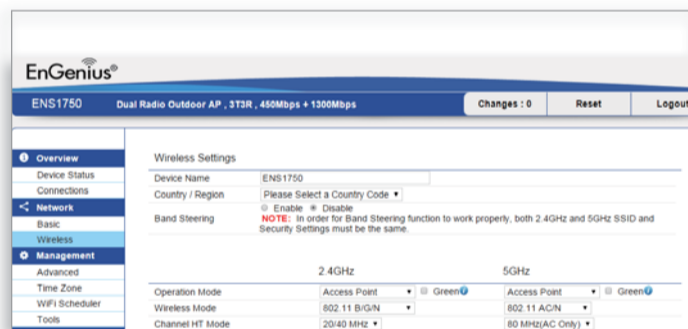
- Open a web browser on your computer. In the address bar of the web browser, enter **192.168.1.1** and **enter**.



- A login screen will appear. By default, the username of the Access Point is **admin** and the password is **admin**. Enter the current username and password of the Access Point and then click **Login**.



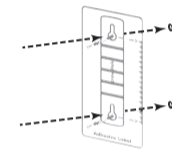
- The EnGenius Access Point User Interface will appear. This device can operate in Access Point operating mode.



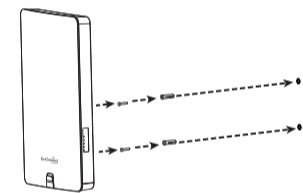
\* Your model number may be different in the web browser interface.

## Wall Mounting The AP

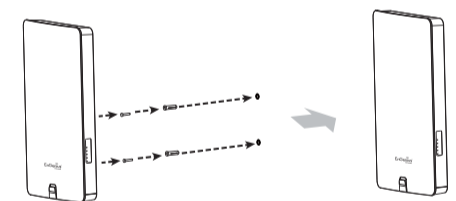
- Attach the location sticker to the desired location on the wall and use a 6mm drill bit to drill the two holes.



- Insert the screw anchors into the 6mm holes then insert the screws and tighten.

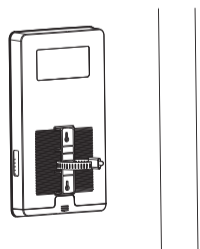


- Align the access point over the keyhole mounting slots and insert both screw heads into each keyhole slot. Then slide the access point downward until it's firmly hooked in place.

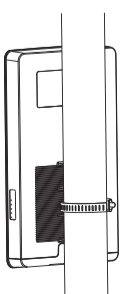


## Pole Mounting The AP

- Use a flathead screwdriver to unfasten the screw on the pole mounting ring and thread it through the middle tab on the rear of the access point.



- Mount the access point onto the pole by wrapping the ring around the pole and fastening the screw.



## Technical Support

0900-9434222 (0900-WIFIABC)

## Notes